

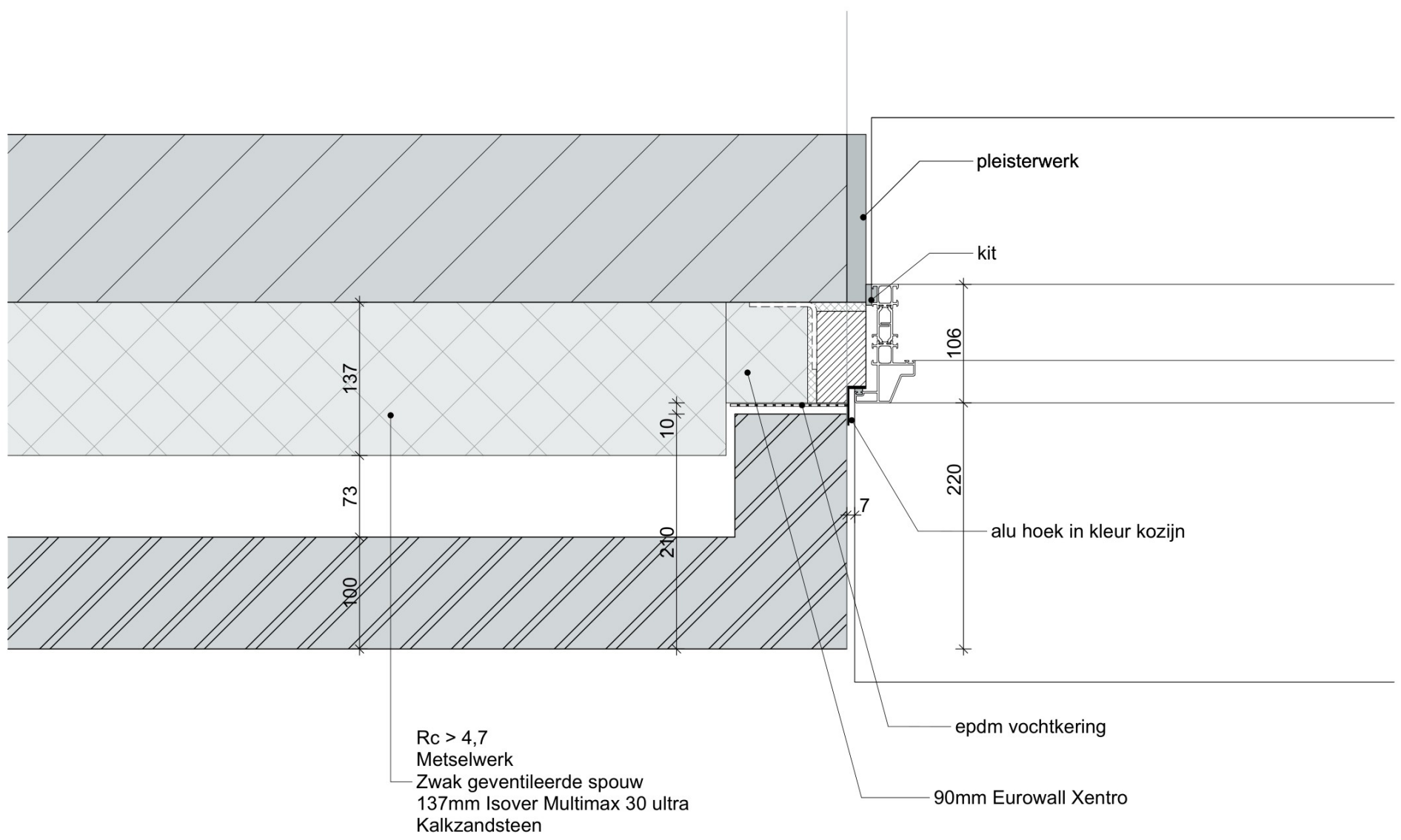


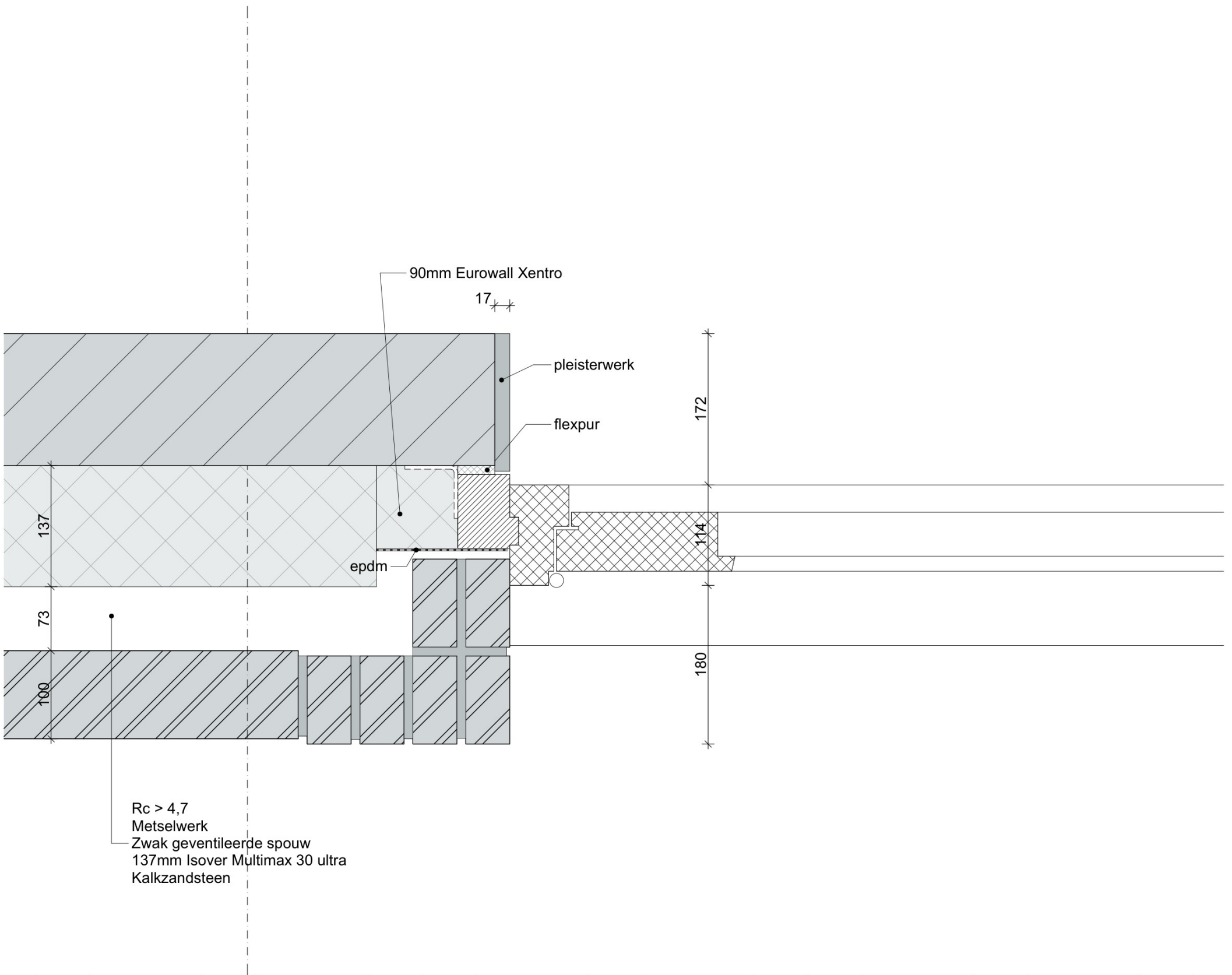
Zorgstede, wonen Middelweg Moordrecht  
Gemiva-SVG / Drost-IJserman

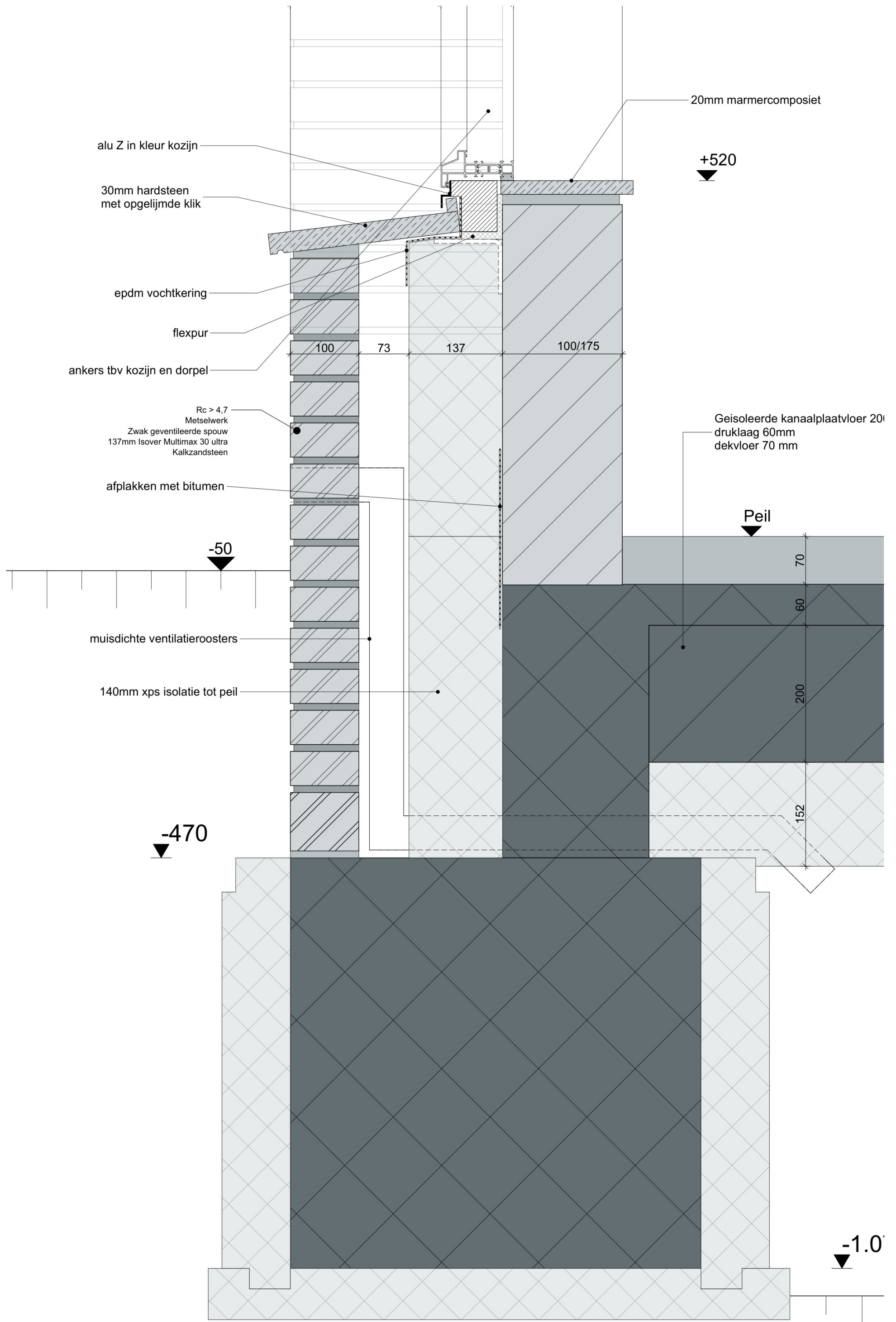
**Details 1 op 5**

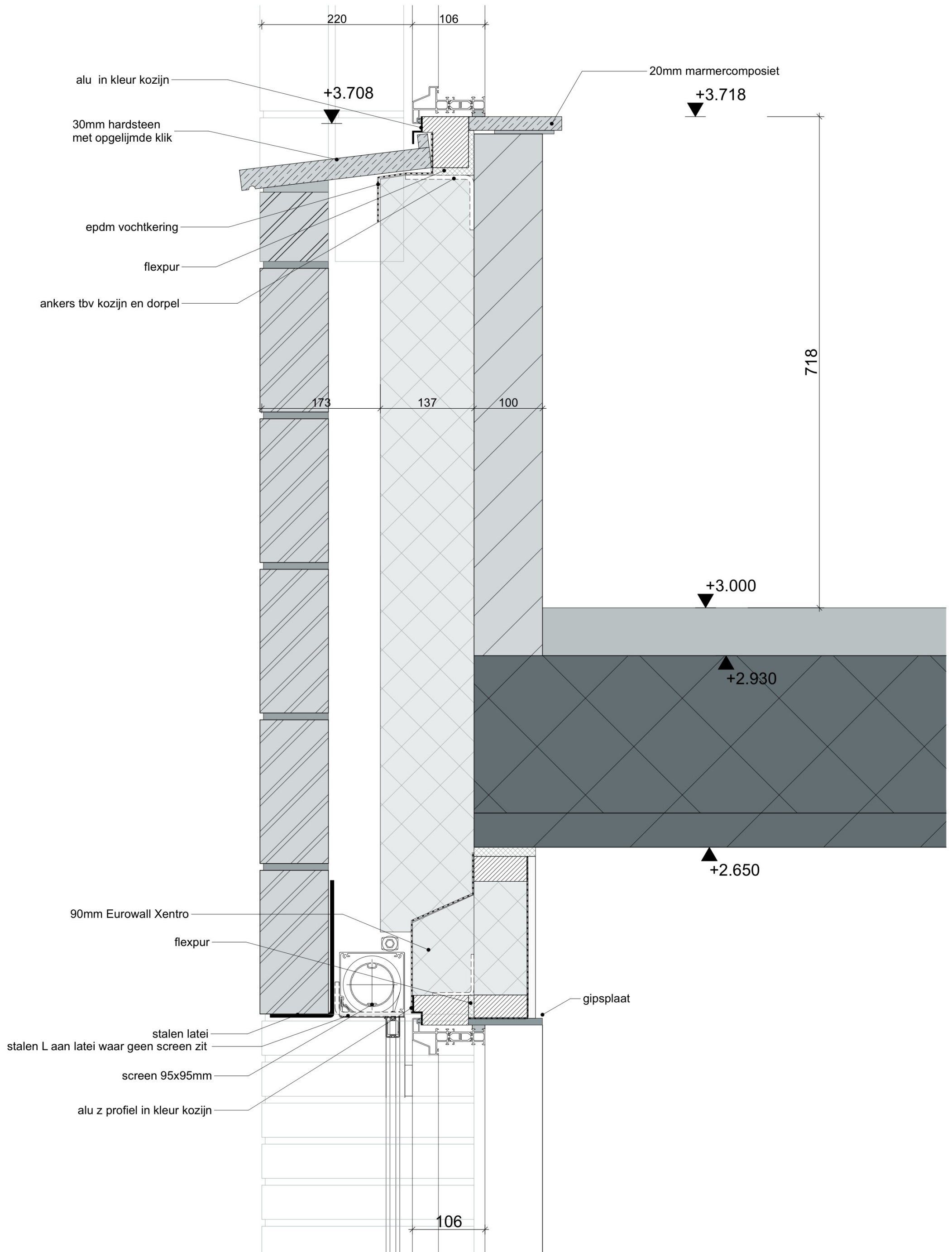
Lucasbolwerk 6 3512 EG Utrecht 030-2314716 [www.cita.nl](http://www.cita.nl)

Fase: Definitief Ontwerp  
Status: definitief  
Datum: 04-07-2024  
Formaat: A3  
Nummer: **4-00**

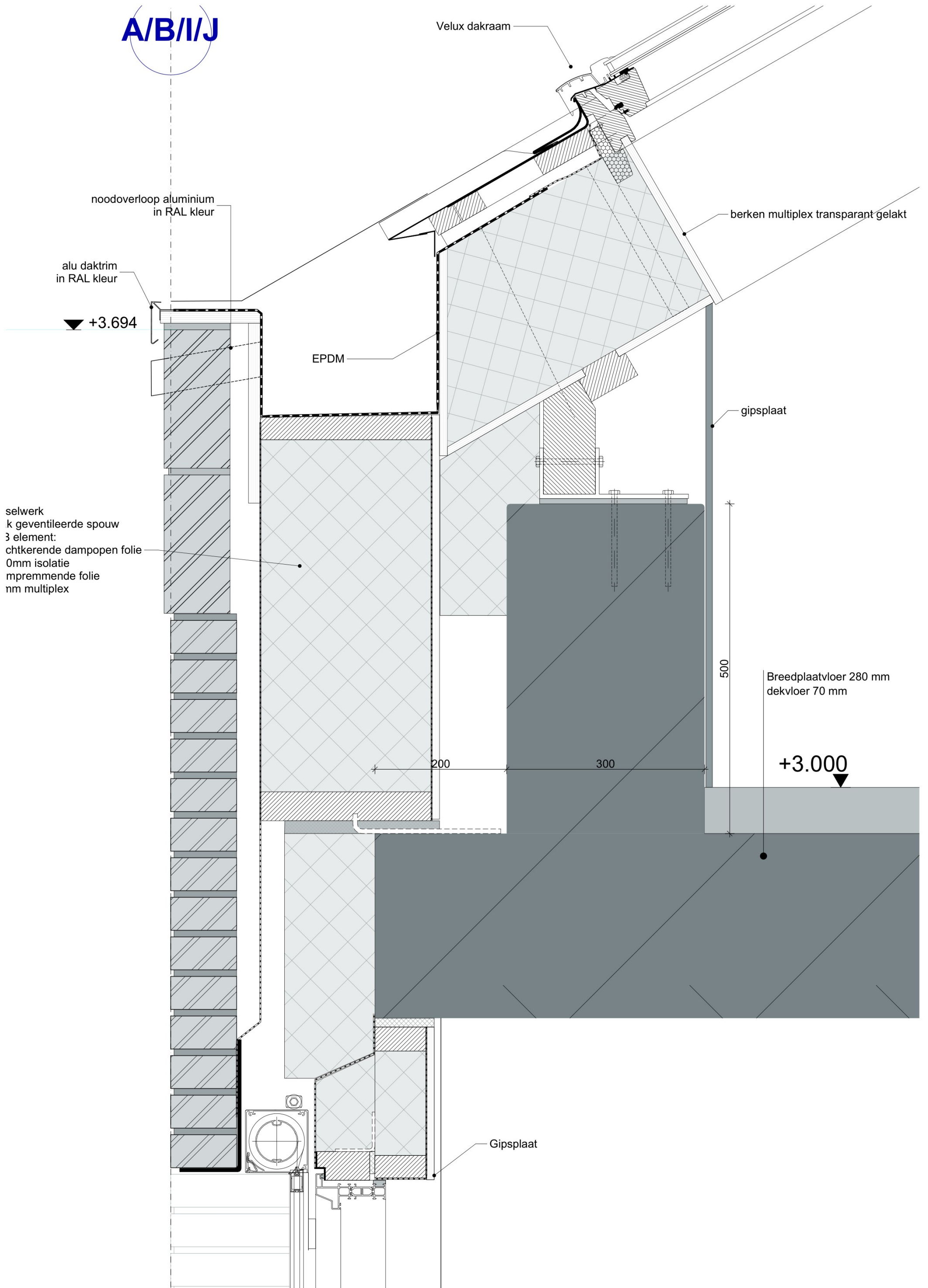


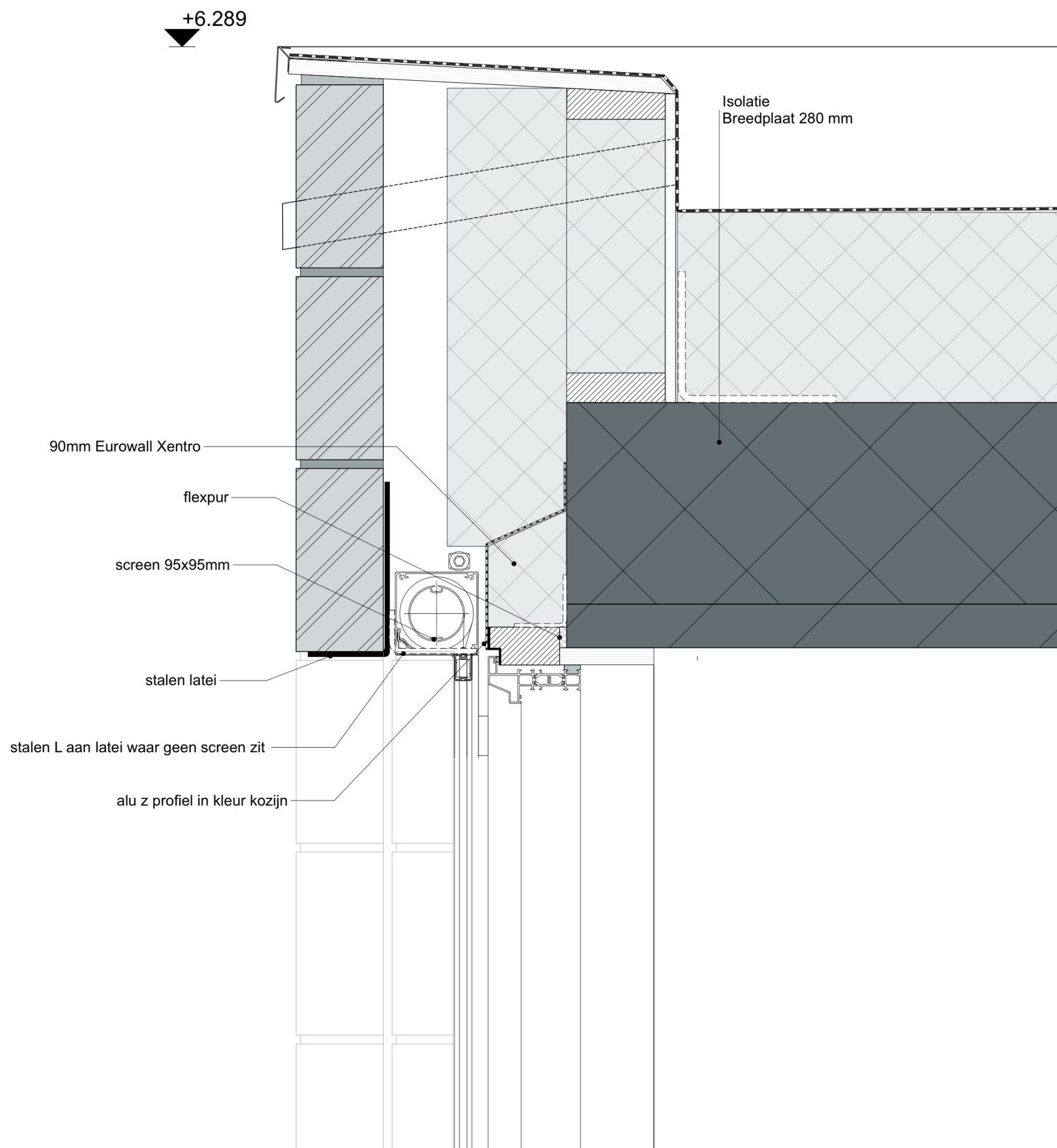


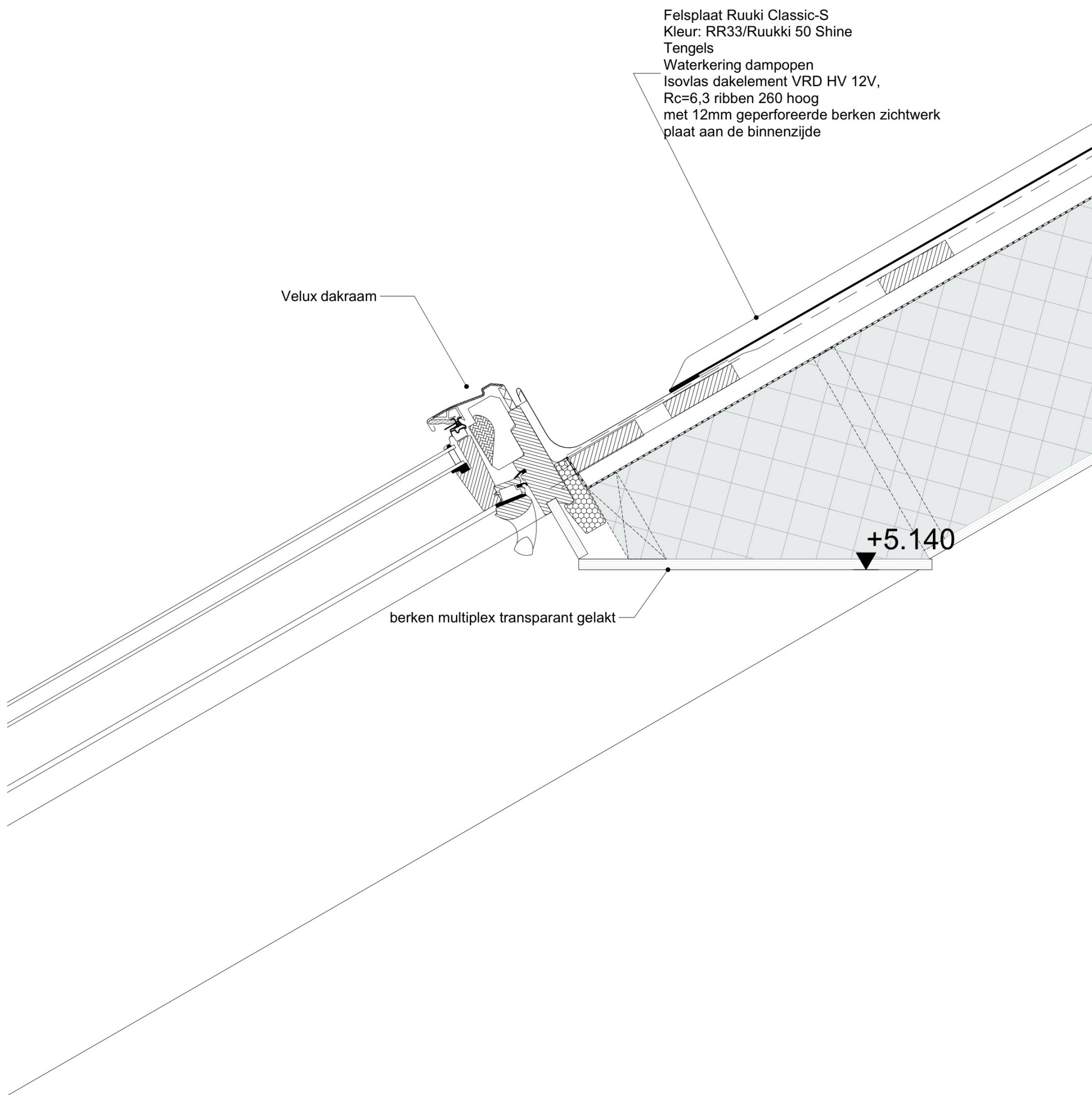




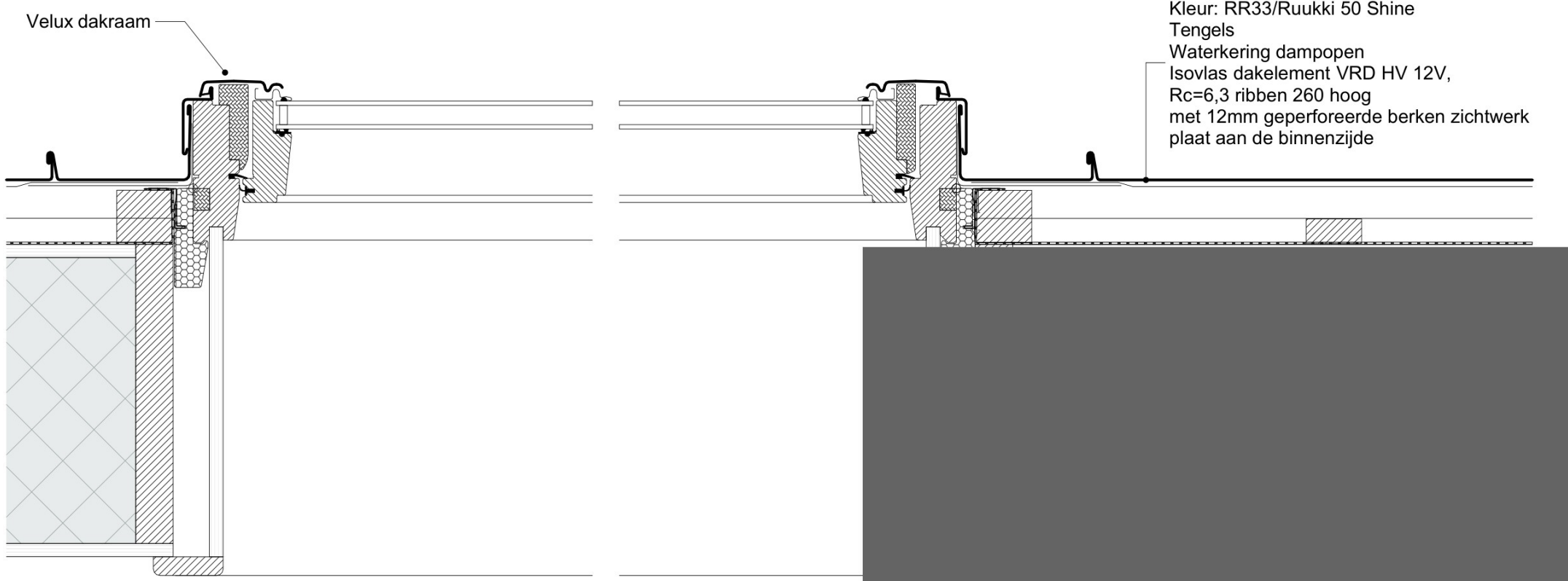
04

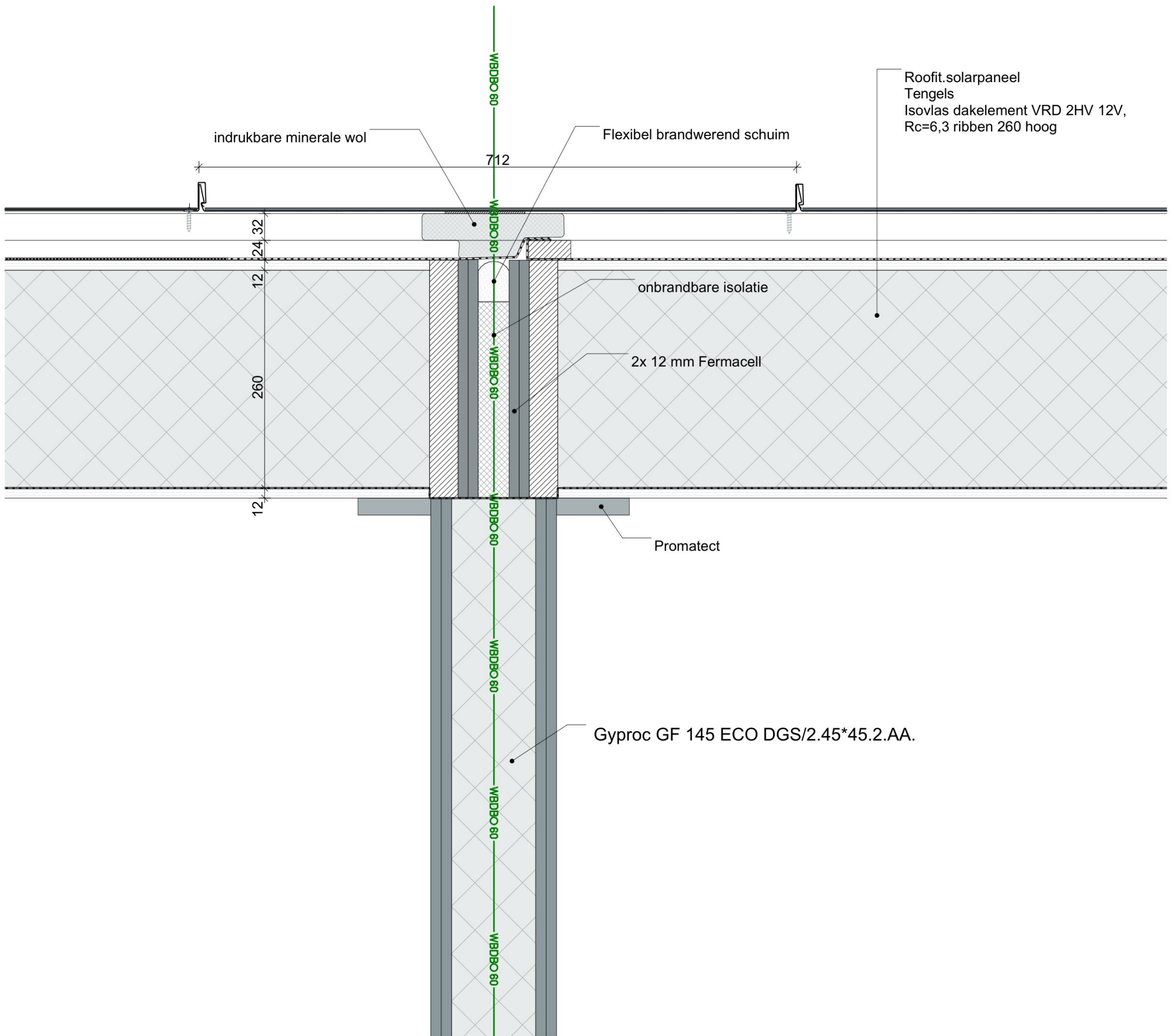




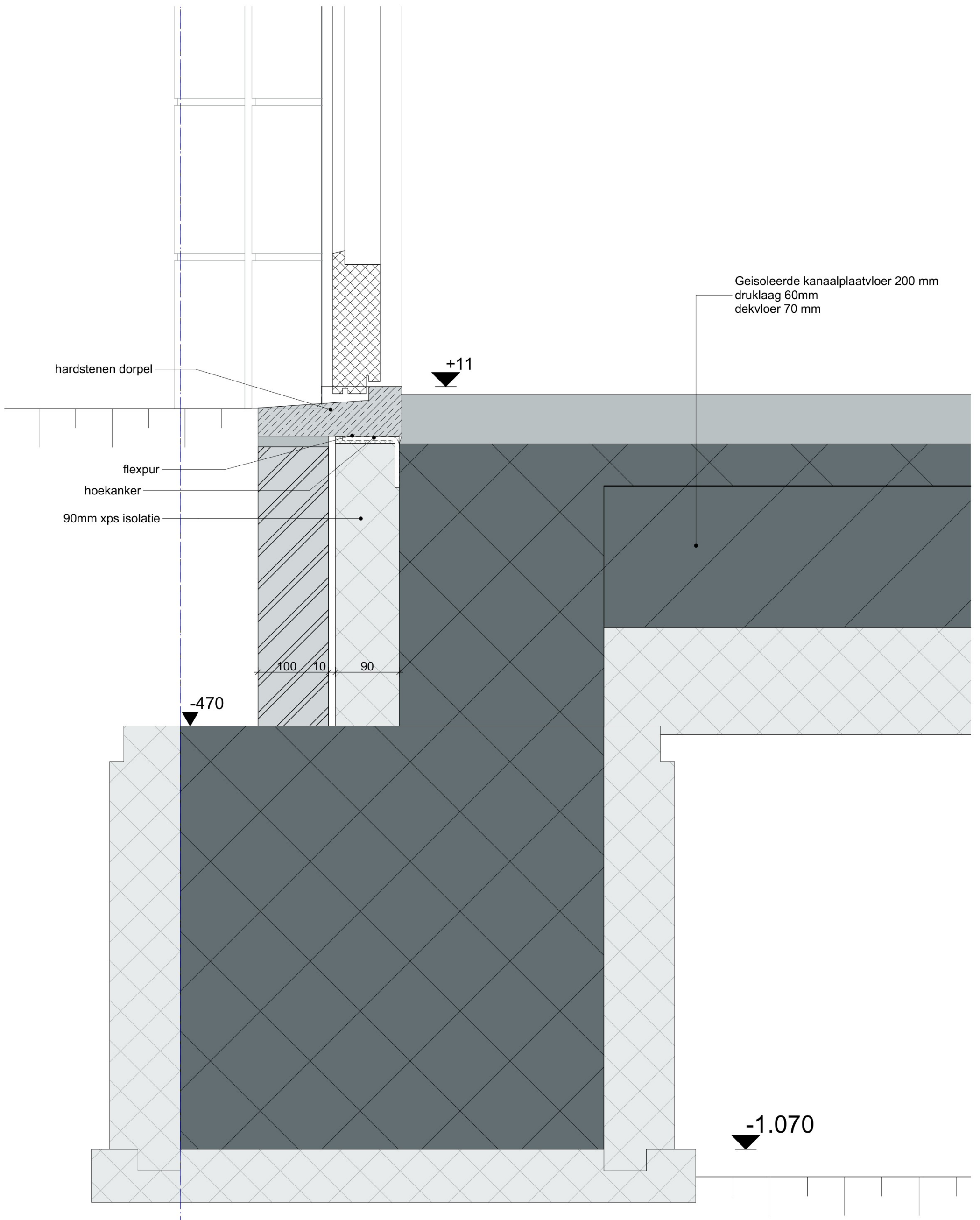




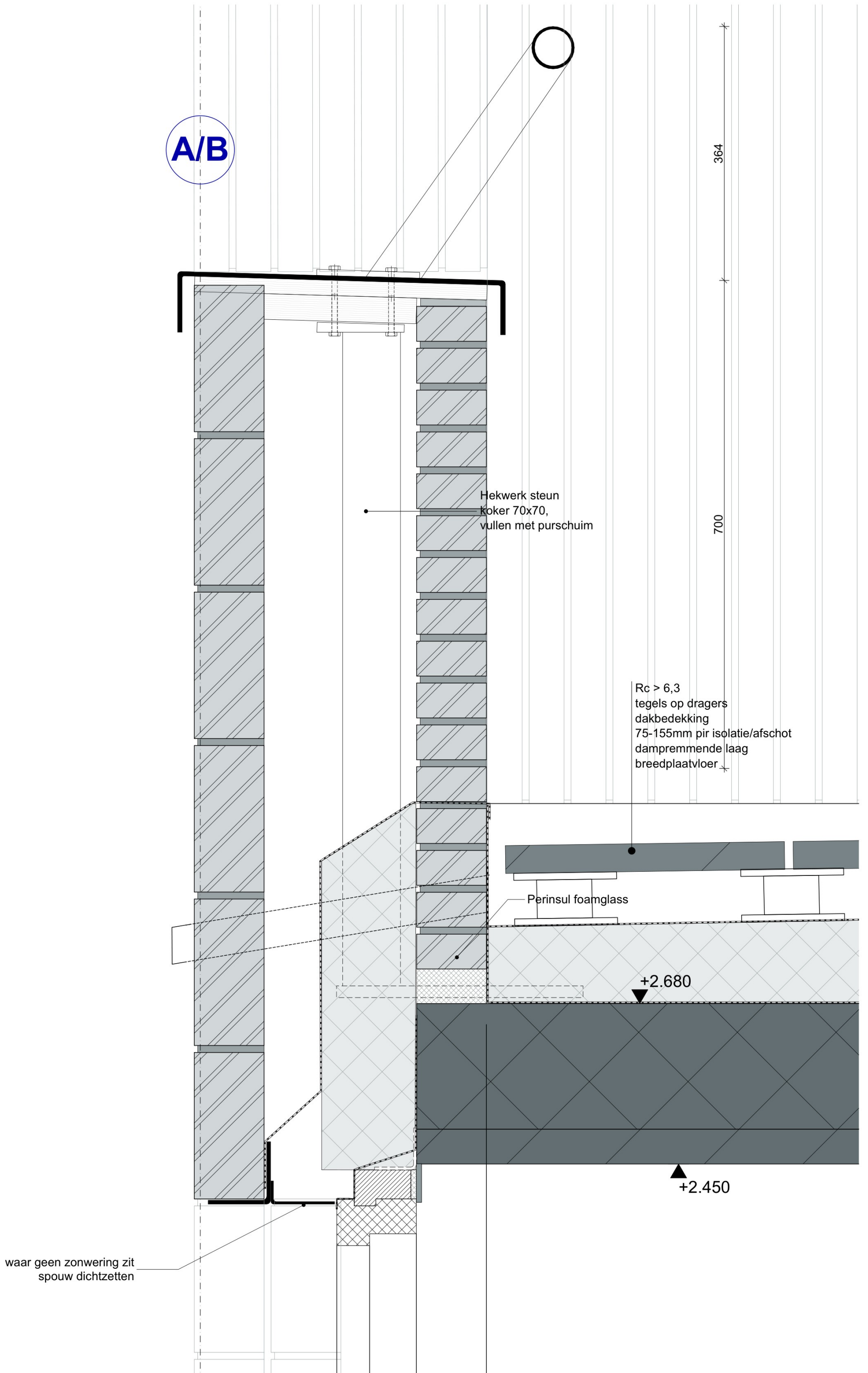




08a



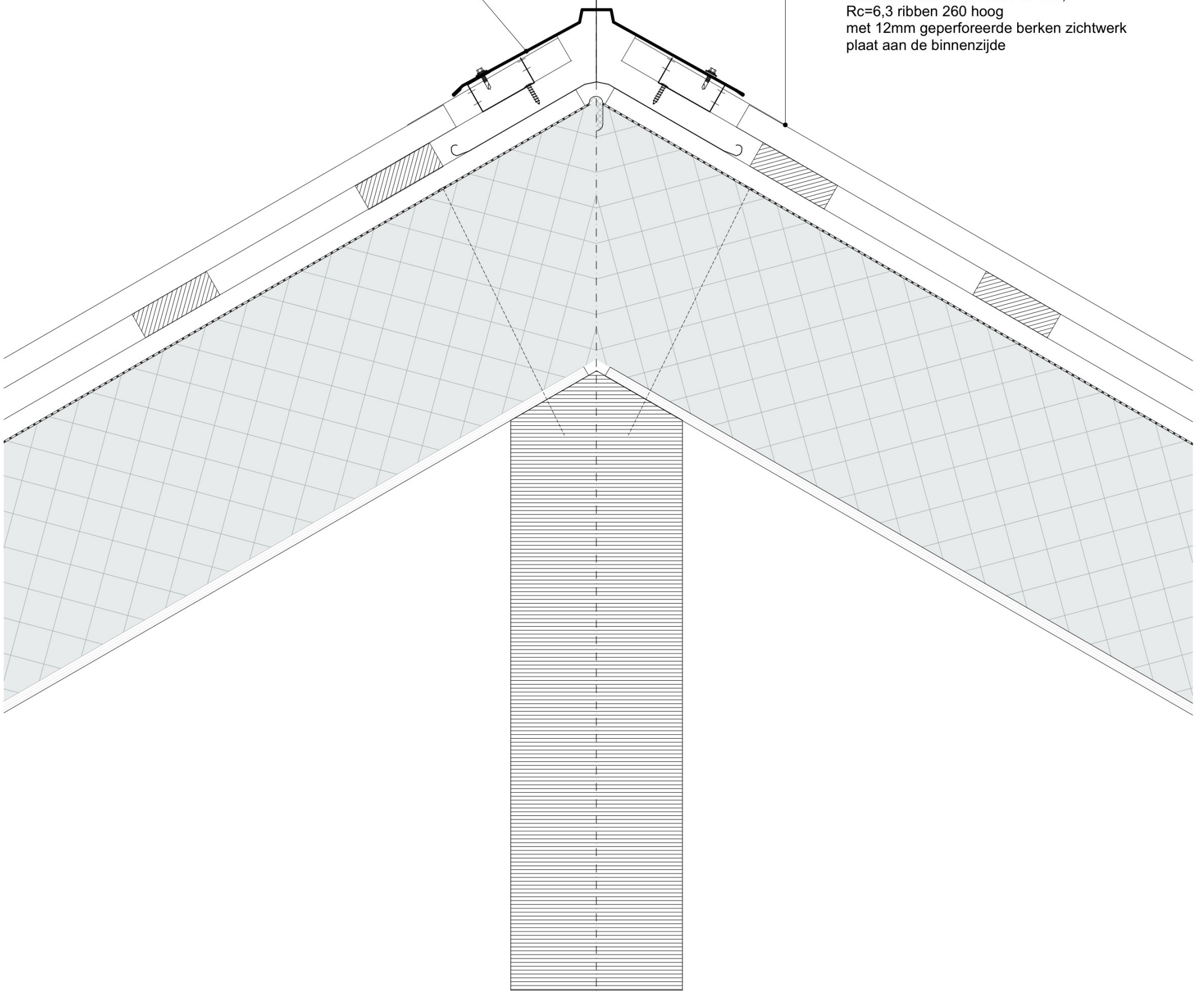
A/B



D/G

Nokelementen Ruuki inclusief  
bevestigingsmiddelen

Felsplaat Ruuki Classic-S  
Kleur: RR33/Ruukki 50 Shine  
Tengels  
Waterkering dampopen  
Isovlas dakelement VRD HV 12V,  
Rc=6,3 ribben 260 hoog  
met 12mm geperforeerde berken zichtwerk  
plaat aan de binnenzijde



D/G

Nokelementen Ruuki inclusief  
bevestigingsmiddelen

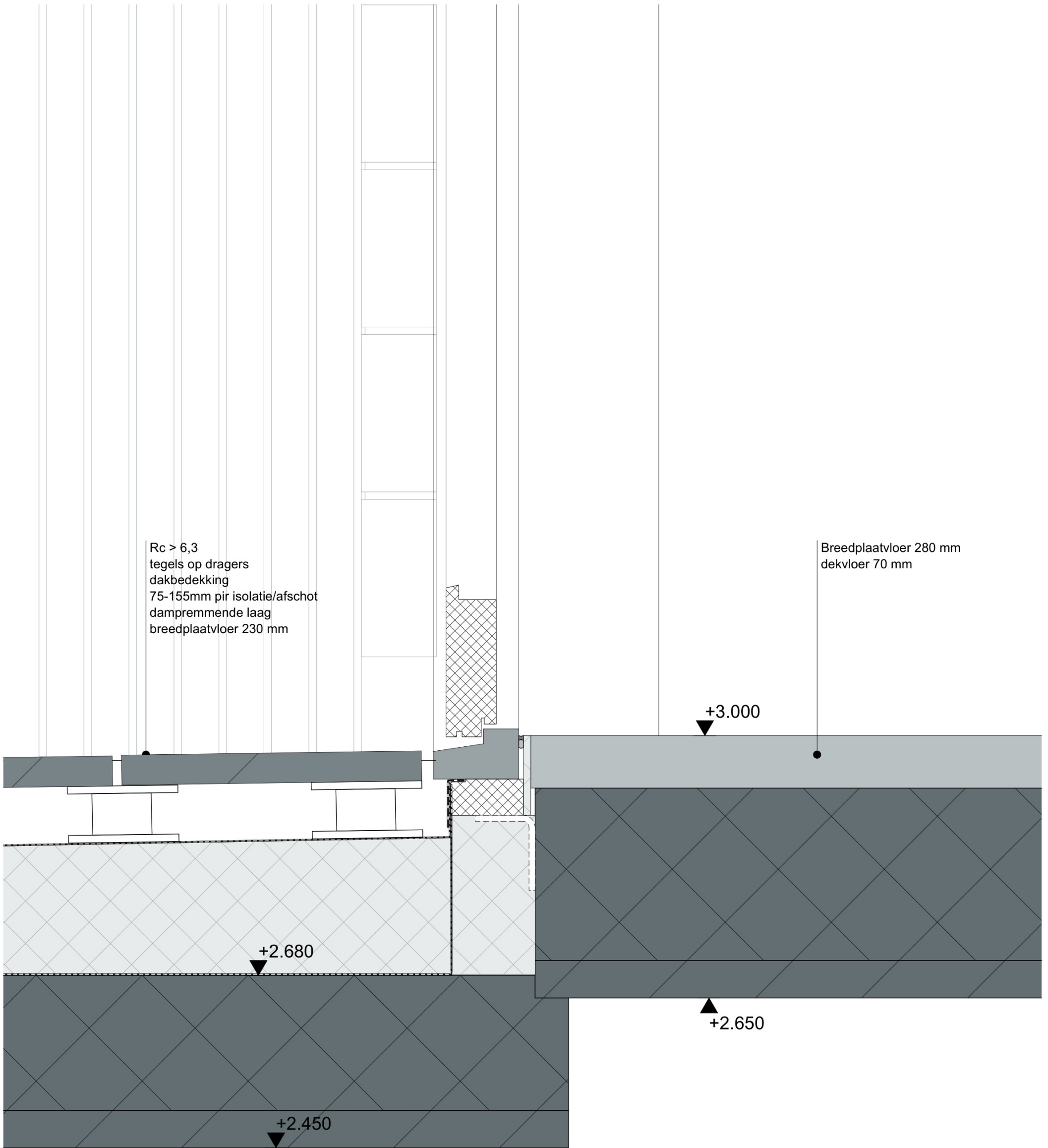
gipsplaat  
brandklasse A2-s1,d0

gipsplaat  
brandklasse A2-s1,d0

gipsplaat  
brandklasse A2-s1,d0

F  
E  
V  
E  
R

11a



Felsplaat Ruuki Classic-S  
 Kleur: RR33/Ruukki 50 Shine  
 Tengels  
 Waterkering dampopen  
 Sovlas dakelement VRD HV 12V,  
 Rc=6,3 ribben 260 hoog  
 met 12mm geperforeerde berken zichtwerk  
 plaat aan de binnenzijde

Goot loopt af naar platte dak

noodoverloop aluminium  
 in RAL kleur

alu daktrim  
 in RAL kleur

▼ +6.218

EPDM

Gelamineerde ligger 200 x 600

Metselwerk  
 zwak geventileerde spouw  
 HSB element:  
 - vochtkerende dampopen folie  
 - 240mm isolatie  
 - dampremmende folie  
 12 mm multiplex

berken multiplex transparant gelakt



